



# Introducing BAMS/DSS<sup>®</sup> 6

---

Trns•port User's Group  
November 2002



# History of BAMS/DSS

- Customized: 1983
  - Core algorithms, modified database
- Generic: 1991
  - Generic database, flexible for each state
- Version 3: 1993
  - Multi platform, single code base
  - Workstation version
- Version 4/5: 1998
  - Introduced Client/Server and Stand-Alone



# Goals of Version 6

- Transform the BAMS/DSS database into a Trns•port data warehouse
- Provide for future database expansion and architecture improvements
- Create an avenue for secure data browse access to a wider audience



# Expanded Database

- Retains all current database tables
- Additional tables and columns to store all PES<sup>®</sup> /LAS<sup>®</sup> operational data
- Additional tables and columns to store all SiteManager<sup>®</sup> operational data



# Re-Engineered Data Management

- **Web-based data browser**
  - Same functionality, new interface
- **Generalized Importer**
  - Same functionality, new architecture
- **Direct Imports**
  - Added one step import with direct pull
- **Error Tables**
  - Character Columns
  - Separate Import



# Updated Architecture

- Application Server
  - Provides Batch Job Scheduling
- Web Server
  - Supports the Data Browser
- Database Server
  - support for a new RDBMS – MySQL
- Stand-Alone Version
  - Now requires SAS/Access to ODBC and will work with all Windows 2000 RDBMS



# Enhanced BAMS/DSS Data Views

- Merging of construction data
  - Options for integration of SiteManager data
- New English preferred flag
  - Support for multiple metric spec years
- Option to include English and metric unit systems in a single Data View
- Item Grouping Model
  - Similar to metrication, modifies the Data Views



# Additional Model Report Formats

- Improved display & printing of draft graphics
- New graphics output with 6.2a (w/SAS 8.2)
  - Acrobat PDF & Rich Text Format (RTF)
  - HTML, and HTML Frames w/TOC
- New report output with 6.2b (w/SAS 8.2)
  - Acrobat PDF, Rich Text Format (RTF)
  - HTML, and HTML Frames w/TOC
  - Activex (for Graphics)



# Line Item Profiles – LIS

AASHTO'S BAMS/DSS Statistical Analysis Models 12:21 Monday, November 4, 2002 1  
September 2001

LINE ITEM PROFILE - BID VARIATION STATISTICS  
BASED ON ENGINEER'S ESTIMATE

----- CONTRACT=20010918002 STATUS=Awarded COUNTY=14/DODGE LET DATE=01-09-18 AWARDED AMOUNT=\$1,115,462 -----

VENDOR	VENDOR STATUS	VENDOR'S TOTAL BID	BID TOTAL FOR ITEMS SELECTED	NUMBER OF ITEMS SELECTED	MEAN ITEM PCT OVER ESTIMATE	STD DEV PCT OVER ESTIMATE	MINIMUM PCT OVER ESTIMATE	MAXIMUM PCT OVER ESTIMATE
HO11/HOFFMAN CONSTRU	W	\$1,115,462	\$839,077	10	-0.675	3.640	-8.880	4.390
MUSSON BROS., INC.	L	\$1,218,611	\$927,467	10	0.050	3.401	-8.880	3.150
** ESTIMATE **		\$1,219,625	\$921,210	10	0.000	0.000	0.000	0.000
R & R WASH MATERIALS	L	\$1,297,814	\$986,078	10	0.531	3.527	-8.880	3.160

----- CONTRACT=20010918003 STATUS=Awarded COUNTY=14/DODGE LET DATE=01-09-18 AWARDED AMOUNT=\$1,157,495 -----

VENDOR	VENDOR STATUS	VENDOR'S TOTAL BID	BID TOTAL FOR ITEMS SELECTED	NUMBER OF ITEMS SELECTED	MEAN ITEM PCT OVER ESTIMATE	STD DEV PCT OVER ESTIMATE	MINIMUM PCT OVER ESTIMATE	MAXIMUM PCT OVER ESTIMATE
PTASCHINSKI CONSTRUC	W	\$1,157,495	\$757,538	16	0.124	1.751	-3.160	3.970
** ESTIMATE **		\$1,178,511	\$733,962	16	0.000	0.000	0.000	0.000
CA35/JAMES CAPE & SO	L	\$1,321,619	\$887,823	16	0.815	2.049	-1.950	5.170
HO11/HOFFMAN CONSTRU	L	\$1,323,461	\$891,375	16	0.835	2.486	-3.330	5.250
PA33/PARISI CONSTRUC	L	\$1,353,487	\$920,279	16	0.988	3.161	-1.950	11.750

----- CONTRACT=20010918005 STATUS=Awarded COUNTY=67/WAUKESHA LET DATE=01-09-18 AWARDED AMOUNT=\$373,542 -----

VENDOR	VENDOR STATUS	VENDOR'S TOTAL BID	BID TOTAL FOR ITEMS SELECTED	NUMBER OF ITEMS SELECTED	MEAN ITEM PCT OVER ESTIMATE	STD DEV PCT OVER ESTIMATE	MINIMUM PCT OVER ESTIMATE	MAXIMUM PCT OVER ESTIMATE
ZE15/ZENITH TECH., I	W	\$373,542	\$268,523	21	-0.085	1.304	-3.270	2.610
** ESTIMATE **		\$382,751	\$275,322	21	0.000	0.000	0.000	0.000
LU08/LUNDA CONSTRUCT	L	\$384,368	\$270,860	21	-0.056	1.387	-3.590	2.480

Ready



# Line Item Profiles - RTF in Word

Microsoft Word window: bidvdata.rtf - Microsoft Word

File Edit View Insert Format Tools Table Window Help

Normal Times New Roman 10 B I U

75%

CONTRACT=20010918002 STATUS=Awarded COUNTY=14/DODGE LET DATE=01-09-18 AWARDED AMOUNT=\$1,115,462

VENDOR	VENDOR STATUS	VENDOR'S TOTAL BID	BID TOTAL FOR ITEMS SELECTED	NUMBER OF ITEMS SELECTED	MEAN ITEM PCT OVER ESTIMATE	STD DEV PCT OVER ESTIMATE	MINIMUM PCT OVER ESTIMATE	MAXIMUM PCT OVER ESTIMATE
HO11/HOFFMAN CONSTRU	W	\$1,115,462	\$839,077	10	-0.675	3.640	-8.880	4.390
MUSSON BROS., INC.	L	\$1,218,611	\$927,467	10	0.030	3.401	-8.880	3.130
** ESTIMATE **		\$1,219,625	\$921,210	10	0.000	0.000	0.000	0.000
R & R WASH MATERIALS	L	\$1,297,814	\$986,078	10	0.531	3.527	-8.880	3.100

CONTRACT=20010918003 STATUS=Awarded COUNTY=14/DODGE LET DATE=01-09-18 AWARDED AMOUNT=\$1,157,495

VENDOR	VENDOR STATUS	VENDOR'S TOTAL BID	BID TOTAL FOR ITEMS SELECTED	NUMBER OF ITEMS SELECTED	MEAN ITEM PCT OVER ESTIMATE	STD DEV PCT OVER ESTIMATE	MINIMUM PCT OVER ESTIMATE	MAXIMUM PCT OVER ESTIMATE
PTASCHINSKI CONSTRUC	W	\$1,157,495	\$757,538	16	0.124	1.751	-3.160	3.970
** ESTIMATE **		\$1,178,511	\$733,962	16	0.000	0.000	0.000	0.000
CA35/JAMES CAPE & SO	L	\$1,321,619	\$887,823	16	0.815	2.049	-1.950	5.170
HO11/HOFFMAN CONSTRU	L	\$1,323,461	\$891,375	16	0.835	2.486	-3.330	5.230
PA33/PARISI CONSTRUC	L	\$1,353,487	\$920,279	16	0.988	3.161	-1.950	11.750

CONTRACT=20010918005 STATUS=Awarded COUNTY=67/WAUKESHA LET DATE=01-09-18 AWARDED AMOUNT=\$373,542

VENDOR	VENDOR STATUS	VENDOR'S TOTAL BID	BID TOTAL FOR ITEMS SELECTED	NUMBER OF ITEMS SELECTED	MEAN ITEM PCT OVER ESTIMATE	STD DEV PCT OVER ESTIMATE	MINIMUM PCT OVER ESTIMATE	MAXIMUM PCT OVER ESTIMATE
ZE15/ZENITH TECH, I	W	\$373,542	\$268,523	21	-0.085	1.304	-3.270	2.610
** ESTIMATE **		\$382,751	\$275,322	21	0.000	0.000	0.000	0.000
LU08/LUNDA CONSTRUCT	L	\$384,368	\$270,860	21	-0.056	1.387	-3.590	2.480



# Line Item Profiles - HTML

September 2001  
**LINE ITEM PROFILE - BID VARIATION STATISTICS**  
**BASED ON ENGINEER'S ESTIMATE**

*CONTRACT=20010918002 STATUS=Awarded COUNTY=14/DODGE LET DATE=01-09-18 AWARDED AMOUNT=\$1,115,462*

VENDOR	VENDOR STATUS	VENDOR'S TOTAL BID	BID TOTAL FOR ITEMS SELECTED	NUMBER OF ITEMS SELECTED	MEAN ITEM PCT OVER ESTIMATE	STD DEV PCT OVER ESTIMATE	MINIMUM PCT OVER ESTIMATE	MAXIMUM PCT OVER ESTIMATE
HO11/HOFFMAN CONSTRU	W	\$1,115,462	\$839,077	10	-0.675	3.640	-8.880	4.390
MUSSON BROS., INC.	L	\$1,218,611	\$927,467	10	0.050	3.401	-8.880	3.150
** ESTIMATE **		\$1,219,625	\$921,210	10	0.000	0.000	0.000	0.000
R & R WASH MATERIALS	L	\$1,297,814	\$986,078	10	0.531	3.527	-8.880	3.160

*CONTRACT=20010918003 STATUS=Awarded COUNTY=14/DODGE LET DATE=01-09-18 AWARDED AMOUNT=\$1,157,495*

VENDOR	VENDOR STATUS	VENDOR'S TOTAL BID	BID TOTAL FOR ITEMS SELECTED	NUMBER OF ITEMS SELECTED	MEAN ITEM PCT OVER ESTIMATE	STD DEV PCT OVER ESTIMATE	MINIMUM PCT OVER ESTIMATE	MAXIMUM PCT OVER ESTIMATE
PTASCHINSKI CONSTRUC	W	\$1,157,495	\$757,538	16	0.124	1.751	-3.160	3.970
** ESTIMATE **		\$1,178,511	\$733,962	16	0.000	0.000	0.000	0.000
CA35/JAMES CAPE & SO	L	\$1,321,619	\$887,823	16	0.815	2.049	-1.950	5.170
HO11/HOFFMAN CONSTRU	L	\$1,323,461	\$891,375	16	0.835	2.486	-3.330	5.250
PA33/PARISI CONSTRUC	L	\$1,353,487	\$920,279	16	0.988	3.161	-1.950	11.750



# Line Item Profiles - PDF

Adobe Acrobat - [bidvdata.pdf]

File Edit Document Tools View Window Help

Bookmarks thumbnails notations signatures

- Bid Variation Statistics
  - Data Set WORK.BIDVDATA
  - CONTRACT=20010918002 STATUS=A
  - CONTRACT=20010918003 STATUS=A
  - CONTRACT=20010918005 STATUS=A
  - CONTRACT=20010918006 STATUS=A
  - CONTRACT=20010918007 STATUS=A
  - CONTRACT=20010918008 STATUS=A
  - CONTRACT=20010918010 STATUS=A
  - CONTRACT=20010918011 STATUS=A
  - CONTRACT=20010918012 STATUS=A

12:21 Monday, November 4, 2002 1

*AASHTO'S BAMS/DSS Statistical Analysis Models  
September 2001*

**LINE ITEM PROFILE - BID VARIATION STATISTICS  
BASED ON ENGINEER'S ESTIMATE**

CONTRACT=20010918002 STATUS=Awarded COUNTY=14/DODGE LET DATE=01-09-18 AWARDED AMOUNT=\$1,115,462

VENDOR	VENDOR STATUS	VENDOR'S TOTAL BID	BID TOTAL FOR ITEMS SELECTED	NUMBER OF ITEMS SELECTED	MEAN ITEM PCT OVER ESTIMATE	STD DEV PCT OVER ESTIMATE	MINIMUM PCT OVER ESTIMATE	MAXIMUM PCT OVER ESTIMATE
H011/HOFFMAN CONSTRU	W	\$1,115,462	\$839,077	10	-0.675	3.640	-8.880	4.390
MUSSON BROS., INC.	L	\$1,218,611	\$927,467	10	0.050	3.401	-8.880	3.150
** ESTIMATE **		\$1,219,625	\$921,210	10	0.000	0.000	0.000	0.000
R & R WASH MATERIALS	L	\$1,297,814	\$986,078	10	0.531	3.527	-8.880	3.160

CONTRACT=20010918003 STATUS=Awarded COUNTY=14/DODGE LET DATE=01-09-18 AWARDED AMOUNT=\$1,157,495

VENDOR	VENDOR STATUS	VENDOR'S TOTAL BID	BID TOTAL FOR ITEMS SELECTED	NUMBER OF ITEMS SELECTED	MEAN ITEM PCT OVER ESTIMATE	STD DEV PCT OVER ESTIMATE	MINIMUM PCT OVER ESTIMATE	MAXIMUM PCT OVER ESTIMATE
PTASCHINSKI CONSTRU	W	\$1,157,495	\$757,538	16	0.124	1.751	-3.160	3.970
** ESTIMATE **		\$1,178,511	\$733,962	16	0.000	0.000	0.000	0.000
CA35/JAMES CAPE & SO	L	\$1,321,619	\$887,823	16	0.815	2.049	-1.950	5.170
H011/HOFFMAN CONSTRU	L	\$1,323,461	\$891,375	16	0.835	2.486	-3.330	5.250
PA33/PARIS CONSTRU	L	\$1,353,487	\$920,279	16	0.988	3.161	-1.950	11.750

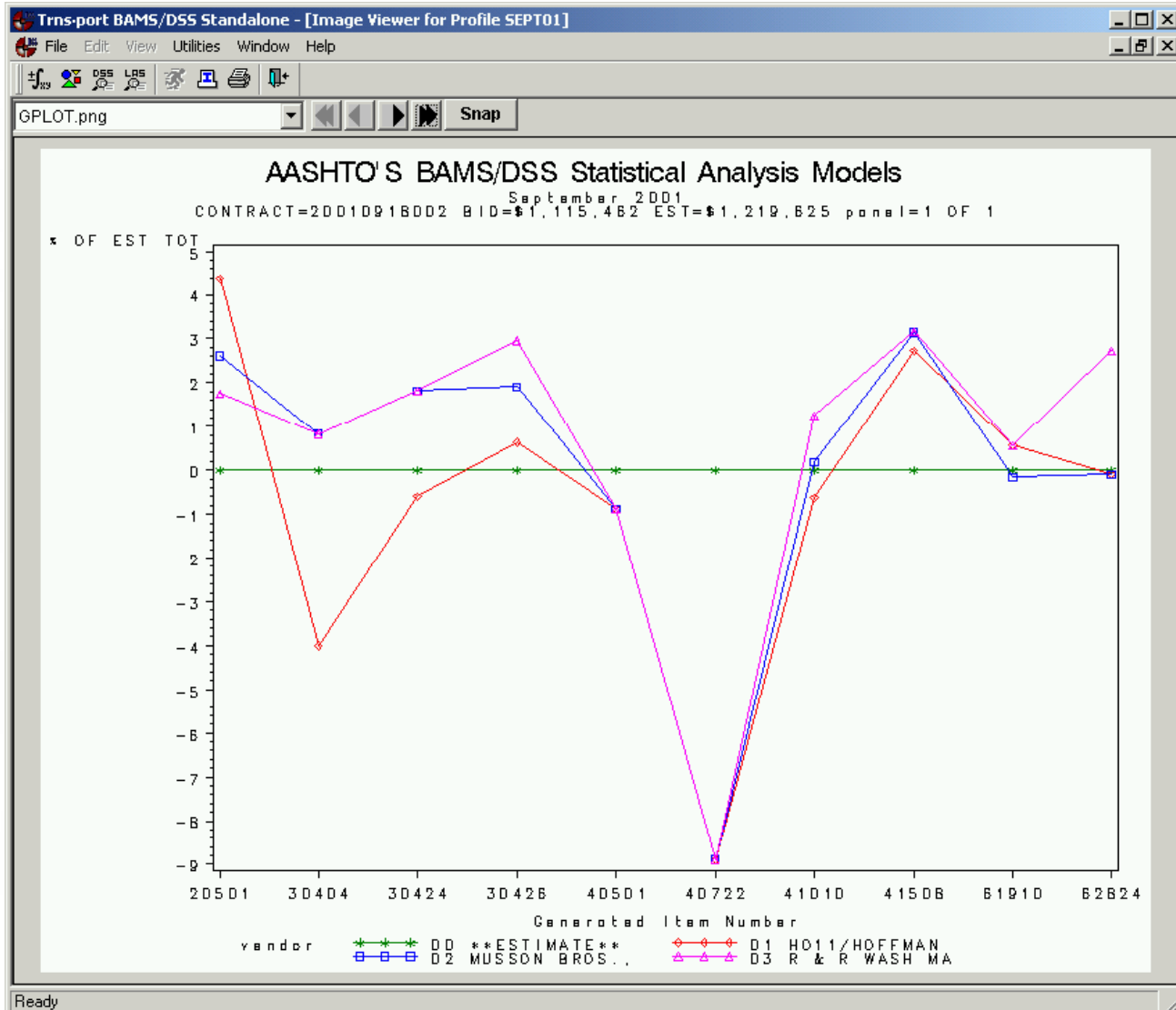
CONTRACT=20010918005 STATUS=Awarded COUNTY=67/WAUKESHA LET DATE=01-09-18 AWARDED AMOUNT=\$373,542

VENDOR	VENDOR STATUS	VENDOR'S TOTAL BID	BID TOTAL FOR ITEMS SELECTED	NUMBER OF ITEMS SELECTED	MEAN ITEM PCT OVER ESTIMATE	STD DEV PCT OVER ESTIMATE	MINIMUM PCT OVER ESTIMATE	MAXIMUM PCT OVER ESTIMATE
ZE15/ZENITH TECH, I	W	\$373,542	\$268,523	21	-0.085	1.304	-3.270	2.610
** ESTIMATE **		\$382,751	\$275,322	21	0.000	0.000	0.000	0.000
LU08/LUNDA CONSTRUCT	L	\$384,368	\$270,860	21	-0.056	1.387	-3.590	2.480
CO33/CONCRETE STRUCT	L	\$417,358	\$297,695	21	0.278	1.175	-2.780	2.610

84% 1 of 3 11 x 8.5 in

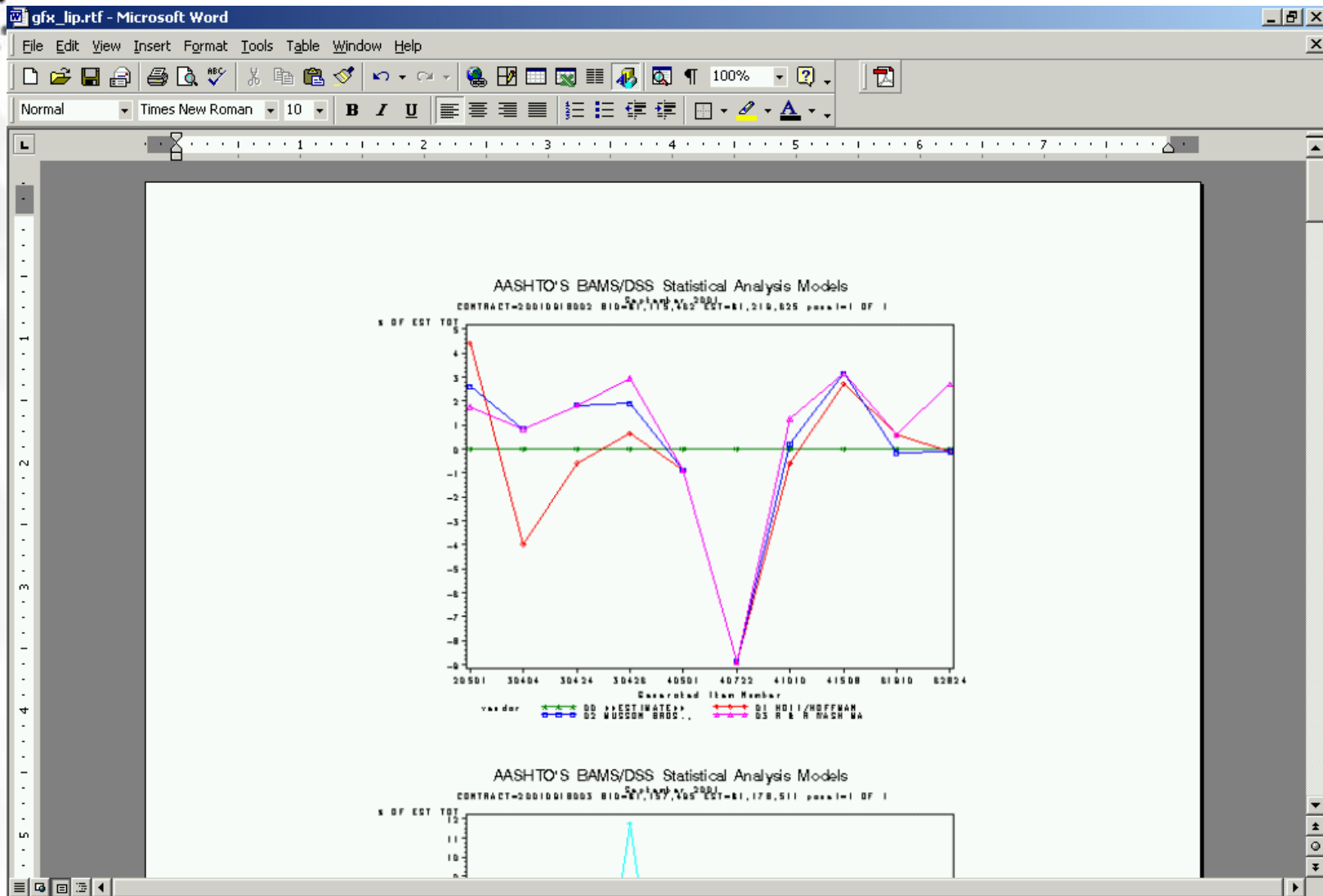


# Line Item Profiles - PNG

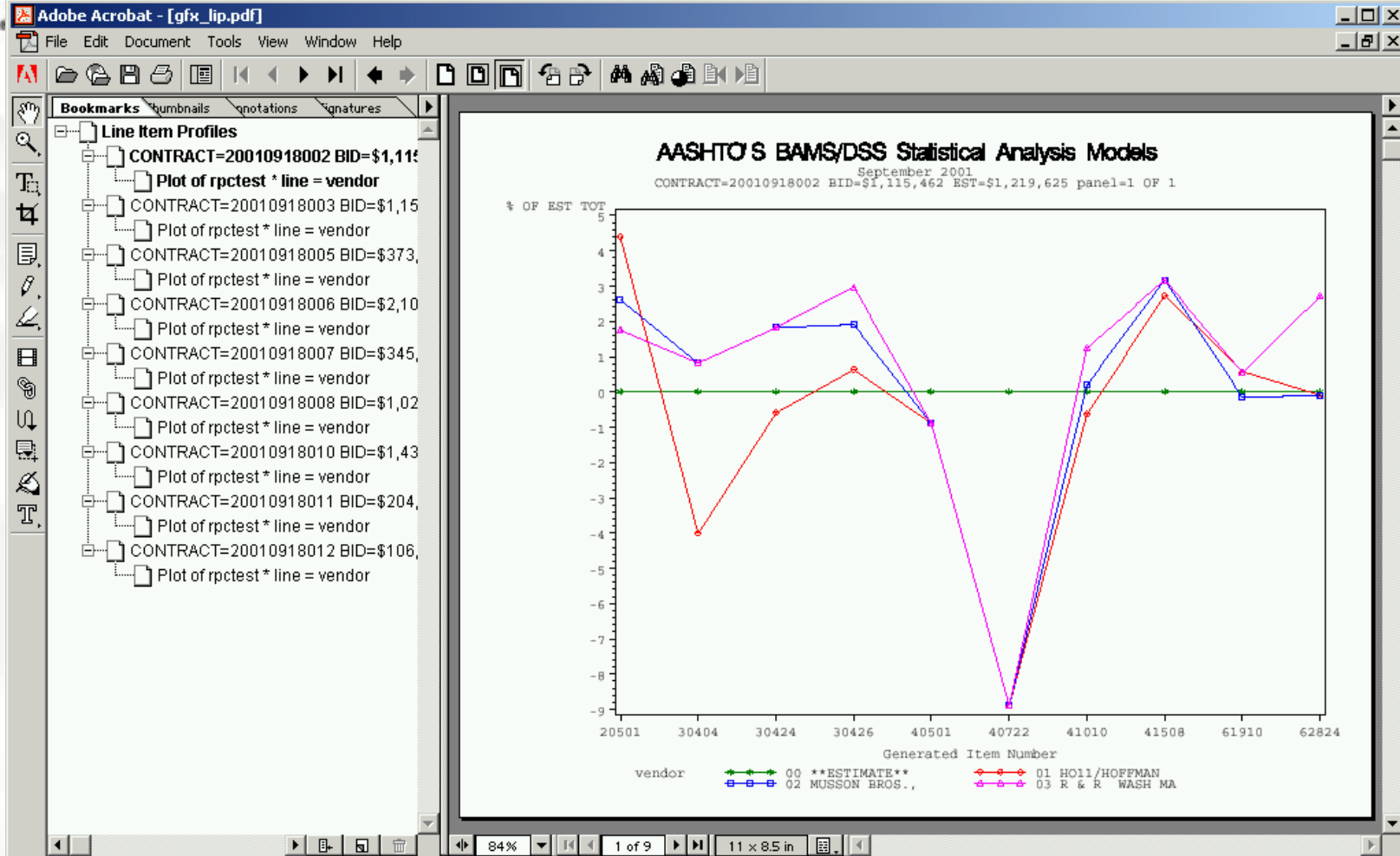




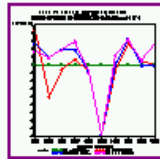
# Line Item Profiles - RTF in Word



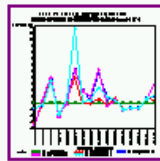
# Line Item Profiles - PDF



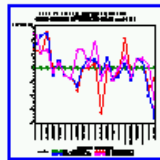
# Line Item Profiles - HTML Frame



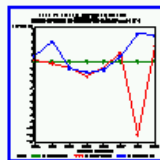
gplot



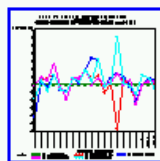
gplot1



gplot2



gplot3

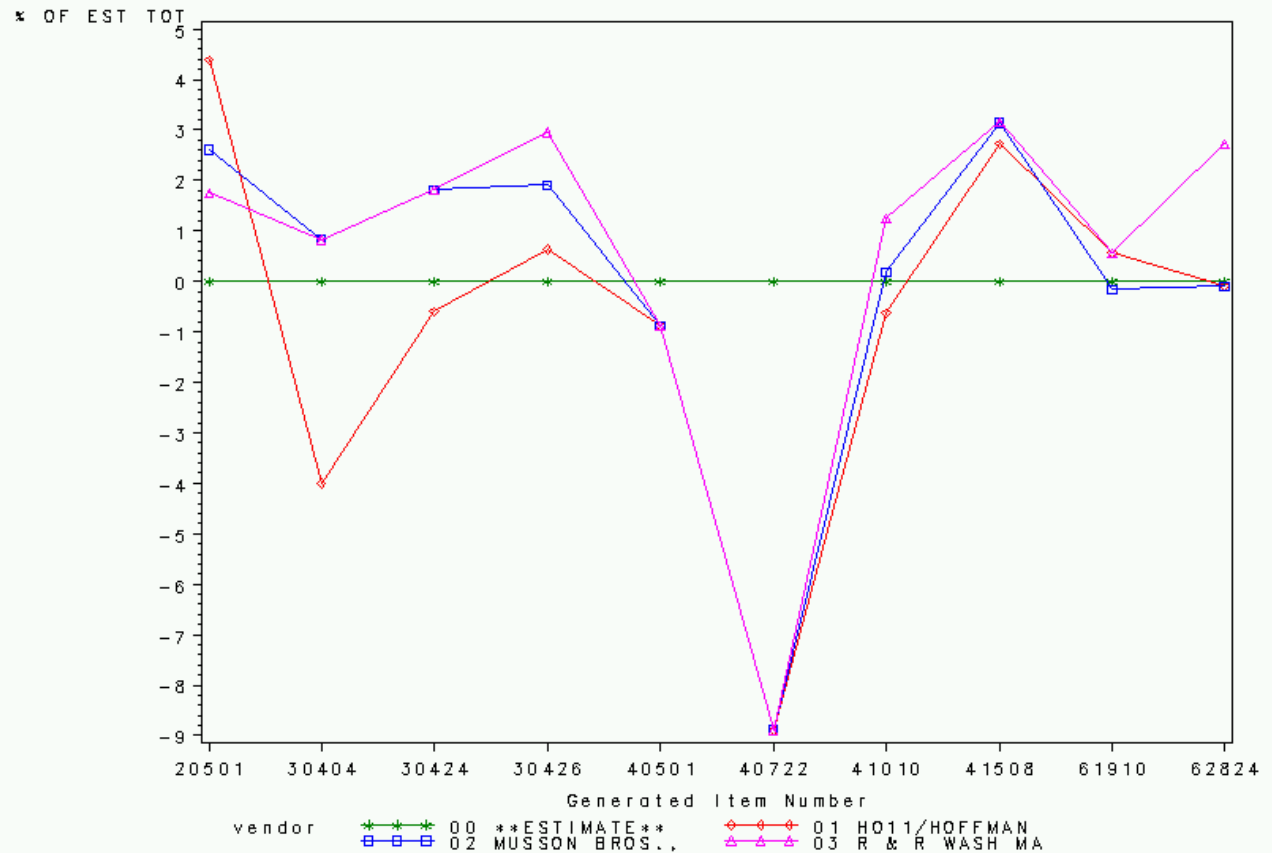


gplot4

## AASHTO'S BAMS/DSS Statistical Analysis Models

September 2001

CONTRACT=20010918002 BID=\$1,115,462 EST=\$1,219,625 panel=1 OF 1

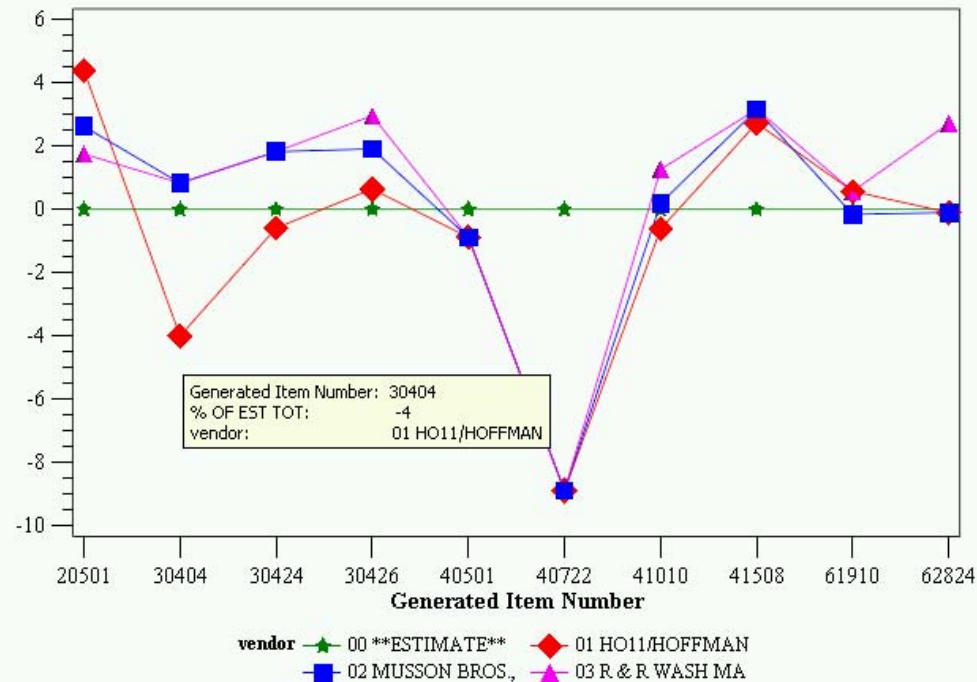


# Line Item Profiles - HTML Activex

## AASHTO'S BAMS/DSS Statistical Analysis Models September 2001

CONTRACT=20010918002 BID=\$1,115,462 EST=\$1,219,625 panel=1 OF 1

% OF EST TOT





# For More Information

- **Version 6 States**
  - CO, NE, NY(workstation)
  - In progress: MI, OK, VT
- **Cloverleaf – New version 6 section including BAMS/DSS 6 White Paper**
  - [www.cloverleaf.net/products/dss](http://www.cloverleaf.net/products/dss)
- **BAMS/DSS Customer Support**
  - [customer.support@cloverleaf.net](mailto:customer.support@cloverleaf.net)



# For More Information - Tonight

- Session at 8:00
  - In the Treaty Oaks room, across from the Townlake Ballroom
- Version 6 Demo
- Discussion of Issues
  - Migration to v6
  - Database Edit
  - SAS Database
- Question/Answer opportunity



# Introducing BAMS/DSS 6

---

Trns•port User's Group  
November 2002